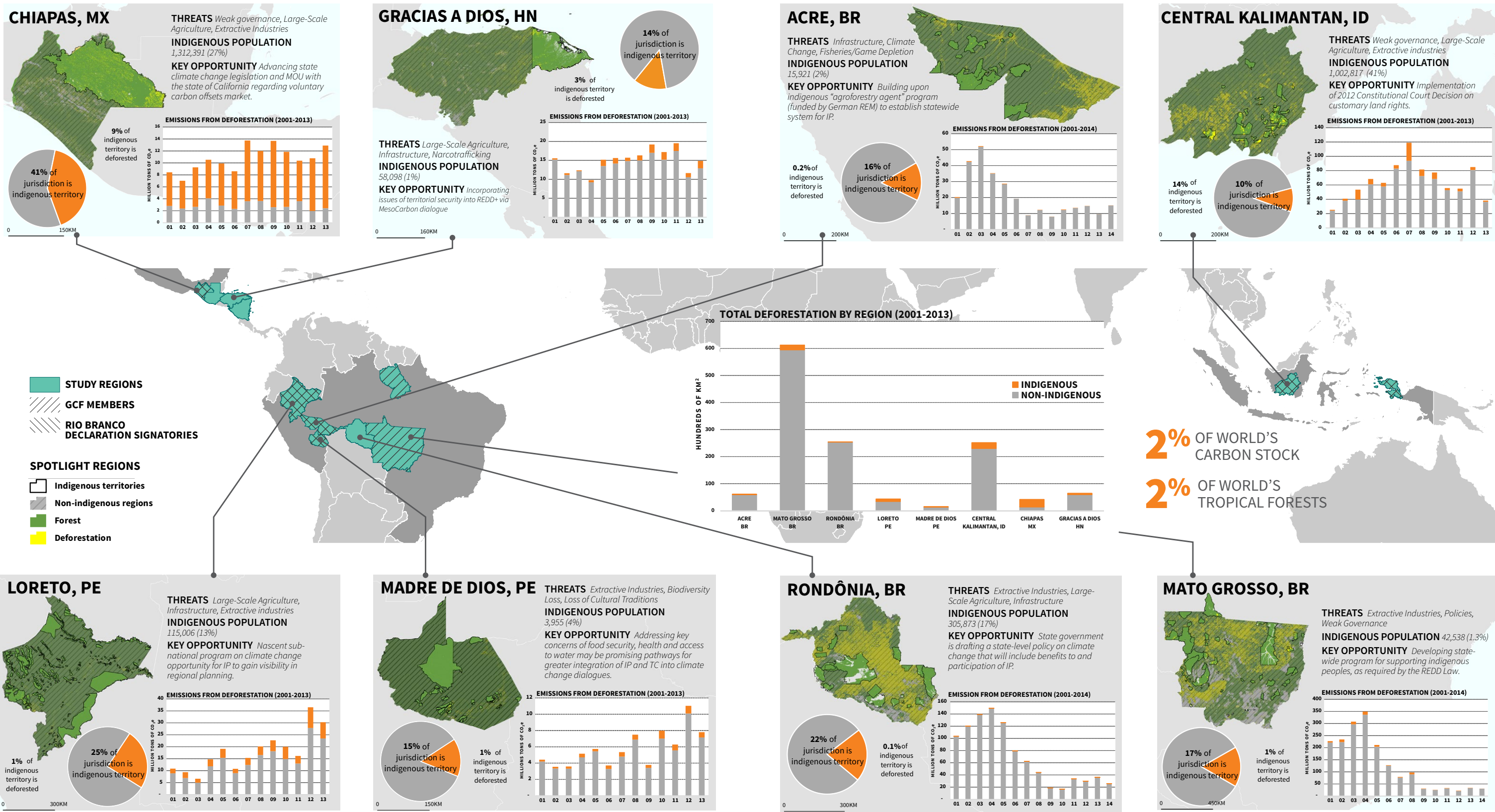


THE STUDY REGIONS AND THEIR INDIGENOUS TERRITORIES



1 Brazil forest cover data source: PRODES (INPE, <http://www.obt.inpe.br/prodes/index.php>); Forest cover data source for remaining regions: M.C. Hansen et al., High Resolution Global Maps of 21-st Century Forest Cover Change. Science 342, 850 (2013)

2 Emissions and carbon stocks calculated by using an average forest carbon content for the forested portion of each region. Carbon data source: A. Baccini et al. Estimated carbon dioxide emissions from tropical deforestation improved by carbon-density maps. Nature Climate Change, 2(3), 182-185 (2012), doi:10.1038/nclimate1354.

3 There are no official indigenous territories in Chiapas, Mexico. The municipalities identified with high indigenous populations were used to approximate indigenous land. (CDI, http://www.cdi.gob.mx/index.php?option=com_content&view=article&id=2578)

4 There are no official indigenous territories in Central Kalimantan, Indonesia. The territories depicted are mapped by Jaringan Kerja Pemetaan Partisipatif (JKPP) and the indigenous population value represents Central Kalimantan's indigenous Dayak population based on Indonesia's 2010 census (Sensus Penduduk 2010).

5 Indigenous territory data sources: Brazil, Fundação Nacional do Índio (FUNAI); Honduras, Sistema Nacional de Información Territorial (SINIT); Indonesia, Jaringan Kerja Pemetaan Partisipatif (JKPP); Mexico, Instituto Nacional de Estadística y Geografía (INEGI); Peru, Instituto del Bien Común (IBC).