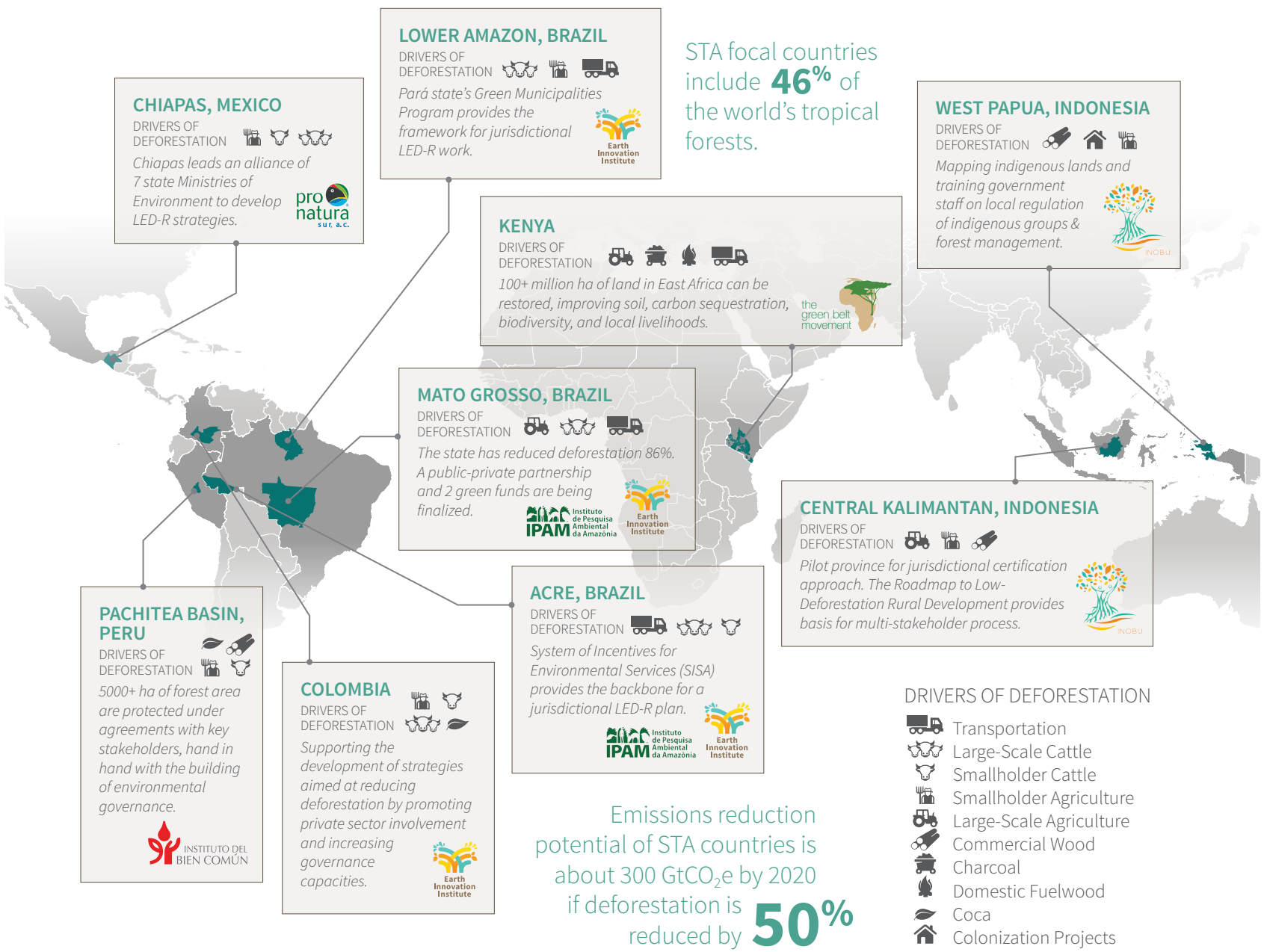




The **Sustainable Tropics Alliance (STA)** is a strategic partnership of independent, non-governmental organizations that draw on research, multi-stakeholder engagement, and local knowledge to develop low-emission rural development (LED-R) models in the Tropics.

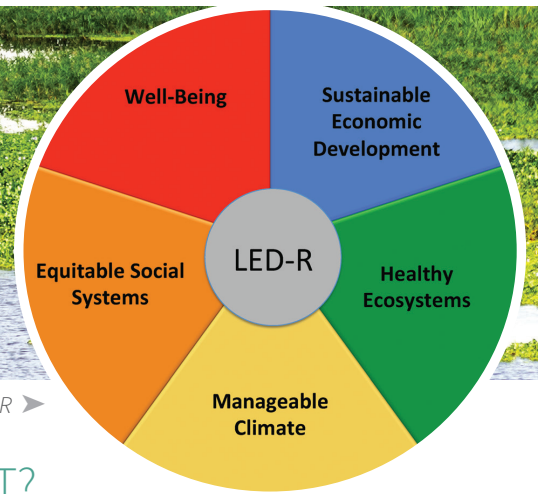
STA MEMBER ORGANIZATIONS INCLUDE

- Earth Innovation Institute (EII - Brazil & Colombia)
- Green Belt Movement (Kenya)
- Pronatura Sur (Mexico)
- Instituto de Pesquisa Ambiental da Amazônia (IPAM - Brazil)
- Yayasan Penelitian Inovasi Bumi (INOBU - Indonesia)
- Instituto del Bien Común (IBC - Peru)
- Verification Research, Training and Information Centre (VERTIC - collaborator)





Five principal pillars define progress toward LED-R ➤



WHAT IS LOW-EMISSION RURAL DEVELOPMENT?

Low-emission rural development (LED-R) can be described as sustainable development, with an emphasis on climate change mitigation and adaptation. LED-R:

- Encompasses entire jurisdictions (natural or political)
- Engages key actors through multi-sector, participatory approaches
- Transforms systems & institutions for governing natural resources
- Empowers local institutions to drive positive change
- Holds climate stability as an explicit goal

The STA serves as a platform for partners to work together at a **global scale to drive policies**, institutional arrangements and market mechanisms that support sustainable LED-R throughout the Tropics. The strength of this network lies in its ability to **share lessons learned**, speak with a common voice on global issues such as climate change, and collectively **design LED-R strategies** that may serve as models for other regions.

STA partners are engaged in cross-cutting actions to catalyze the transition to LED-R, including:

Evidence-based research in support of policy making

- *INOBU* is working with provincial governments in Indonesia to map indigenous lands and build an online, transparent performance monitoring system that allows the government to track progress toward deforestation targets.
- *Earth Innovation Institute* and local partner Sapopema are collecting data on populations of important commercial fish species in the Lower Amazon of Brazil to inform discussions with governments and civil society regarding policies and institutional arrangements for the co-management of floodplain fisheries.

Engaging diverse stakeholders to find common ground, common solutions

- *Instituto del Bien Común* is engaging local and national governments, smallholders, ranchers, indigenous communities, agribusinesses, and civil society of the Pachitea Basin to design Regional Development Plans to guide land management that reduces emissions and respects indigenous lands.

- *Pronatura Sur* is working with the forestry, palm oil and livestock sectors of Chiapas, Mexico to develop sectoral action plans that align incentives for sustainable economic growth.

Designing mechanisms and strategies for LED-R

- *Earth Innovation Institute* is developing a Territorial Performance System in Mato Grosso, Brazil that has contributed substantially to the recent government-led agreement on production, forest and livelihood targets. This historic agreement has brought together public and private sectors to establish a shared vision for moving the state to sustainable development. EII has also built a monitoring platform for tracking progress towards targets and is designing financial mechanisms for supporting this process.
- *IPAM* is developing a jurisdictional performance-based program at the municipal level in Acre to orient investments of the German REDD Early Movers program through SISA, and linking it to the State Plan for Prevention and Control of Deforestation and Fires.

Knowledge sharing and capacity building

- *The Green Belt Movement* coordinates knowledge sharing and capacity building workshops across Kenya to support communities in implementing climate change mitigation and adaptation strategies. Since 1977, it has helped communities plant 51 million trees to protect key hydrological services.
- The STA serves as a platform for members to share experiences and lessons learned in building local strategies for LED-R, and broaden their thinking on conceptual models.

Collective action in the international climate action arena

- Many STA members work in regions that are part of the Governors' Forest and Climate Task Force (GCF), a collaboration between 29 states and provinces seeking to advance jurisdictional programs designed to promote LED-R. In the GCF, STA members are able to share their experiences with LED-R to other jurisdictions across the globe working on similar issues.



SUPPORT PROVIDED BY

