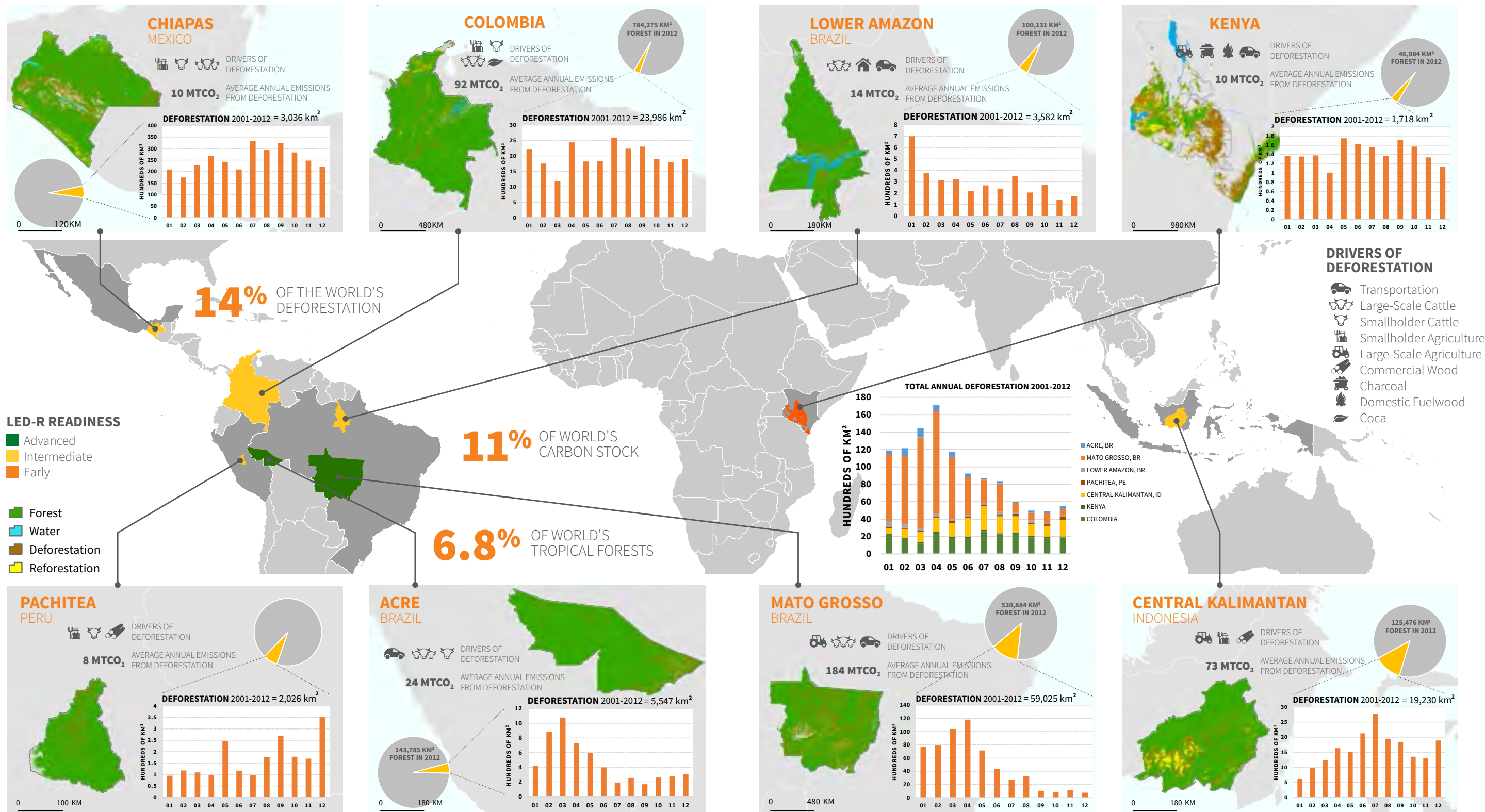


# THE STUDY REGIONS AND THEIR LED-R READINESS

All deforestation and forest cover data is from Hansen et al.<sup>1</sup>, except for Brazilian regions which are from PRODES<sup>2</sup>. Emissions and carbon stocks data in the report are calculated by using an average forest carbon content for the forested portion of the region calculated from Baccini et al.<sup>3</sup>.



1 M. C. Hansen et al., High-Resolution Global Maps of 21st-Century Forest Cover Change. Science 342, 850 (2013).  
2 INPE. (INPE, <http://www.obt.inpe.br/prodes/> 2013) 2013.  
3 A. Baccini et al., Estimated carbon dioxide emissions from tropical deforestation improved by carbon-density maps. Nature Climate Change, 2(3), 182–185 (2012), doi:10.1038/nclimate1354.